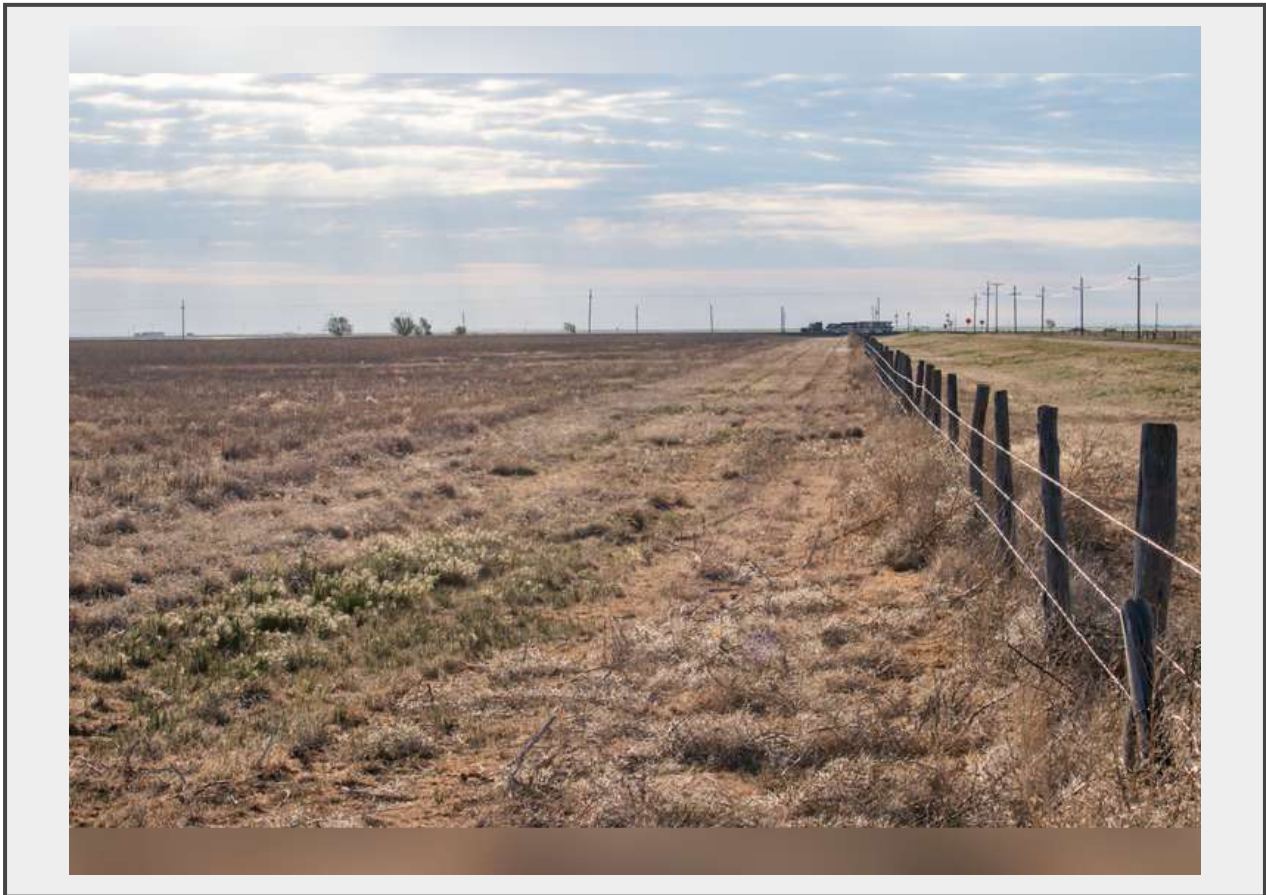


Sale Name: Buckles Farm Absolute, Multi-Parcel Auction

LOT 11 - ±162.40 ACRES Grazing Land



Description

This quarter-section includes 161.77± acres formerly enrolled in CRP. Tract 11 includes one previously operated irrigation well in its northeastern corner that could be utilized for stock water and is ready to graze.

Prior to closing, Tract 11 will be granted an ingress/egress easement to access the property from US Hwy 287 across the southern section line of Tract 10, and at closing, the buyer of Tract 11 may be required to sign an ingress/egress easement granting access along the western section line to the owner of the northwest quarter of Section 312.

[CAD Records, FSA Documents, Well Logs, and Soil Reports](#)

[Preliminary Title Commitment](#)

Quantity: 1



<https://www.trianglelandauctions.com/>